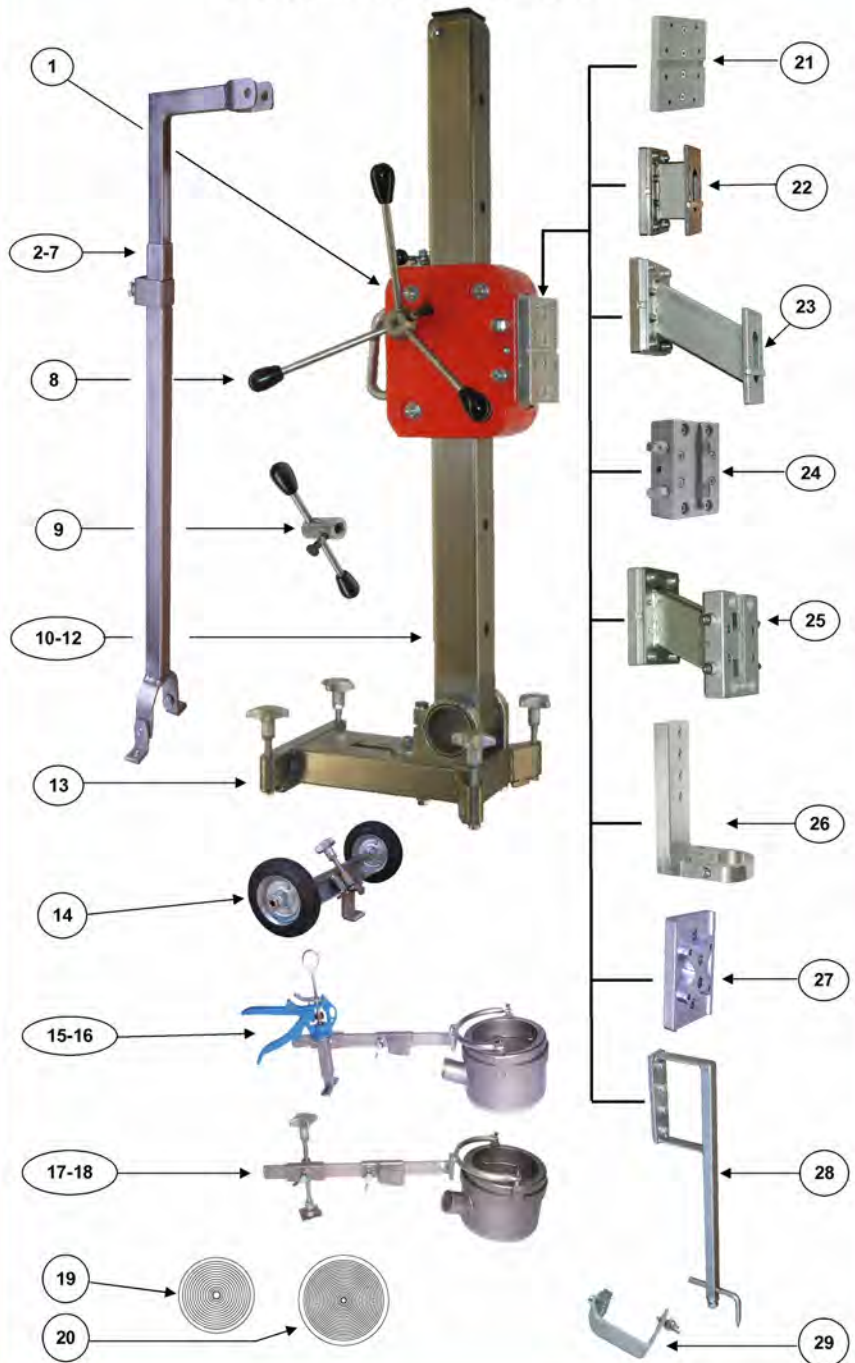


Drill stand KF 400



components and parts list KF 400

Item	Designation	Order no.	Piece
1	Carriage cpl. with colour	250.1.0 K F	1
2	Support 1000 mm cpl.	400.18.00 K	1
3	Support 1400 mm cpl.	400.19.00 K	1
4	Support 2000 mm cpl.	400.20.00 K	1
5	Support 1000 mm for retrofiting	400.21.00 K	1
6	Support 1400 mm for retrofiting	400.22.00 K	1
7	Support 2000 mm for retrofiting	400.23.00 K	1
8	Crank kpl.	250.2.0 K	1
9	Single lever crank cpl.	600.3.0 K	1
10	Column 1000 cpl with flexible bracket	250.6.0 KF G.K	1
11	Column 1400 cpl with flexible bracket	600.6.014 G.K	1
12	Column 2000 cpl with flexible bracket	600.6.020 G.K	1
13	Foot plate steel cpl.	250.4.0 ST.K	1
14	Wheel Kit cpl.	250.4.6 K	1
15	Drill water suction ring+chuck handle D132 cpl.	250.8.0 K	1
16	Drill water suction ring+chuck handle D202 cpl.	250.9.0 K	1
17	Drill water suction ring+chuck screw D132 cpl.	250.8.01 K	1
18	Drill water suction ring+chuck screw D202 cpl.	250.9.01 K	1
19	Membrane D 132	150.8.7	1
20	Membrane D 202	250.8.7	1
21	Drilling motor plate cpl.	250.1.18 K	1
22	Spacer 110 mm cpl.	400.2.0 BD K	1
23	Spacer 190 mm cpl.	600.2.0 BD K	1
24	Quick change distance piece 50 mm cpl.	600.1.19 BG K	1
25	Quick change distance piece 170 mm cpl.	600.2.01 BDG K	1
26	Instep neck crank cpl.	150.11.0 K	1
27	Motor plate for Hilti-Engines cpl.	400.1.18 H K	1
28	Drilling middles indicator, m.d. 115-150 mm cpl.	250.10.2 K	1
29	End stop cpl.	250.6.30 K	1

Technical data KF 400:

Max. bore diameter	400 mm
Slide feed travel	690 mm
Weight	26 kg
Dimensions (height) mm	1140
Max. motor output	5,3 KW
Gear ratio	1:20

More information is available at: www.flei-ka.de

Visit us also: www.facebook.com/fleikasoyen