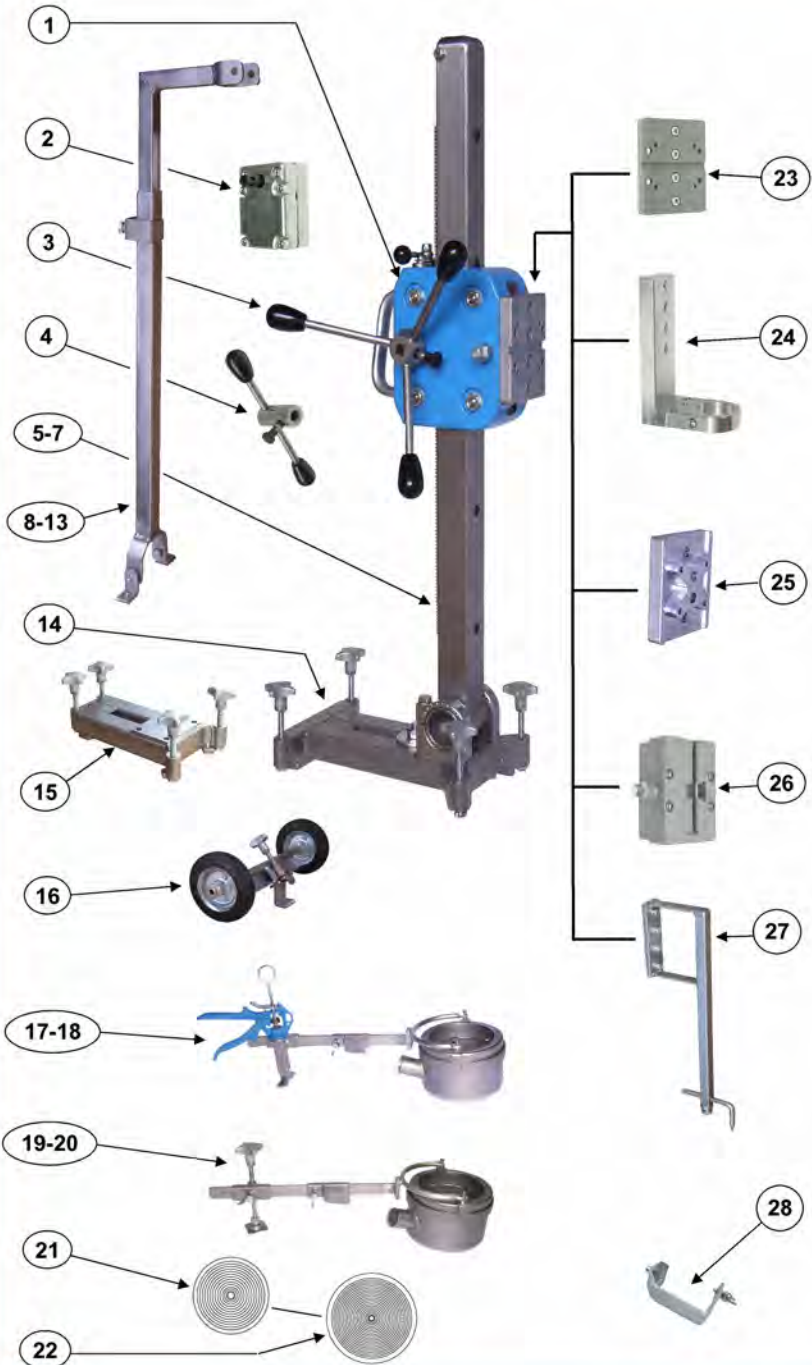


Drill stand KF 250



components and parts list KF 250

Item	Designation	Order no.	Piece
1	Carriage with colour cpl.	150.1.0 KF K F	1
2	Step up gear 1:2,6 cpl.	150.12.00 K	1
3	Crank cpl.	150.2.0 K	1
4	Single lever crank cpl.	150.2.50 K	1
5	Column LG 820 with flexible bracket cpl.	150.6.0 KF G.K	1
6	Column LG 1300 with flexible bracket cpl.	150.6.13 KF G.K	1
7	Column LG 1960 with flexible bracket cpl.	150.6.20 KF G.K	1
8	Support 820 mm cpl.	250.18.00 K	1
9	Support 1300 mm cpl.	250.19.00 K	1
10	Support 1960 mm cpl.	250.20.00 K	1
11	Support 820 mm for retrofitting	250.21.00 K	1
12	Support 1300 mm for retrofitting	250.22.00 K	1
13	Support 1960 mm for retrofitting	250.23.00 K	1
14	Foot plate steel cpl.	150.4.0 ST K	1
15	Foot plate steel cpl. small	150.4.0 ST.Sch K	1
16	Wheel Kit cpl.	250.4.6 K	1
17	Drill water suction ring+chuck handle D132 cpl.	250.8.0 K	1
18	Drill water suction ring+chuck handle D202 cpl.	250.9.0 K	1
19	Drill water suction ring+chuck screw D132 cpl.	250.8.01 K	1
20	Drill water suction ring+chuck screw D202 cpl.	250.9.01 K	1
21	Membrane D 132	150.8.7	1
22	Membrane D 202	250.8.7	1
23	Drilling motor plate cpl.	150.1.18 K	1
24	Instep neck adapter cpl.	150.11.0 K	1
25	Motor plate for Hilti-Engines cpl.	250.1.18 H K	1
26	Quick change distance piece 50 mm cpl.	150.1.19 BG K	1
27	Drilling middles indicator, m.d. 115-150 mm cpl.	250.10.2 K	1
28	End stop cpl.	150.6.30 K	1

Technical data KF 250:

Max. bore diameter	250 mm
Slide feed travel	590 mm
Weight	16 kg
Dimensions (height) mm	950
Max. motor output	3,3 KW
Gear ratio	1:11

More information is available at: www.flei-ka.de

Visit us also: www.facebook.com/fleikasoyen